



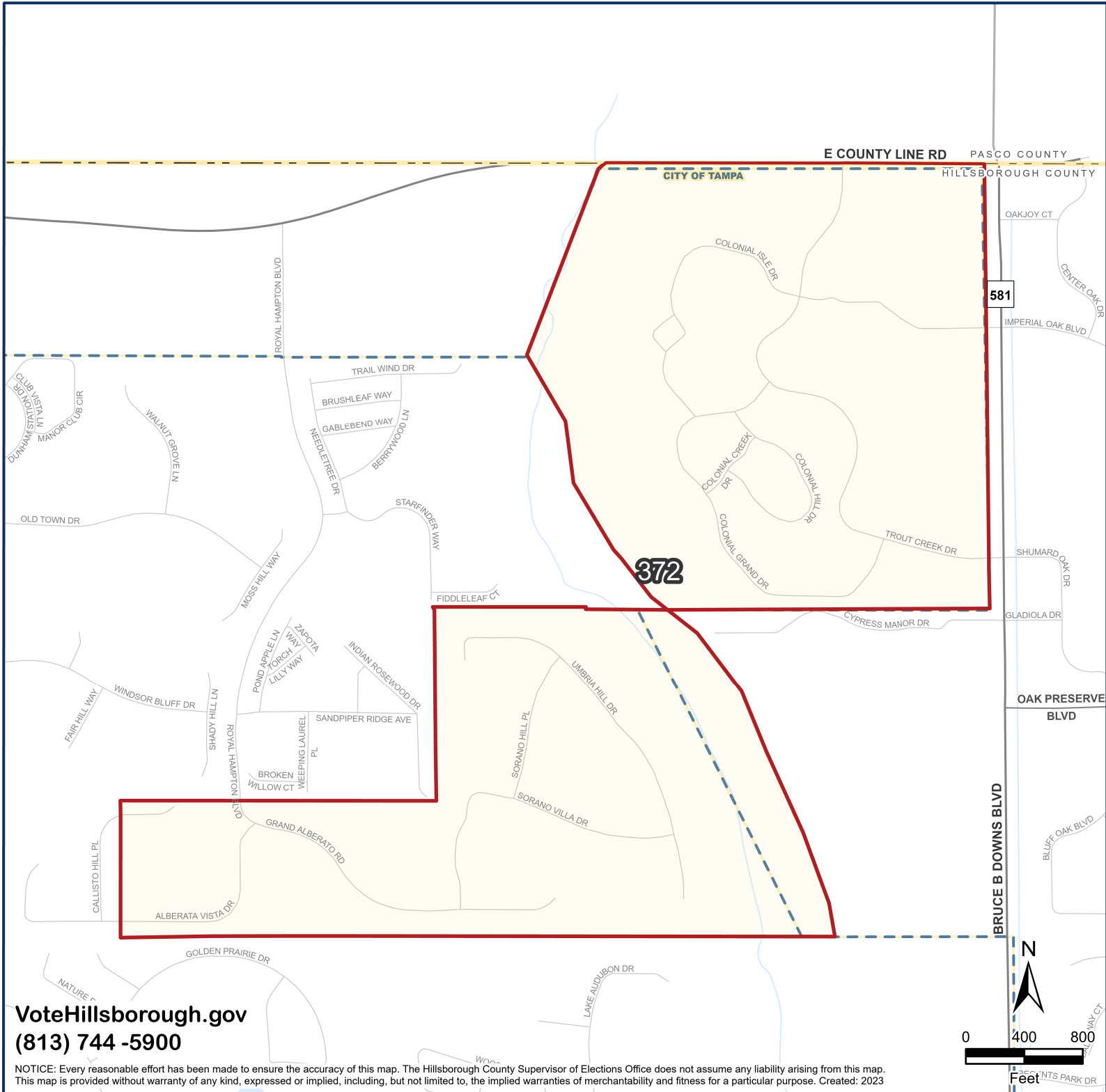
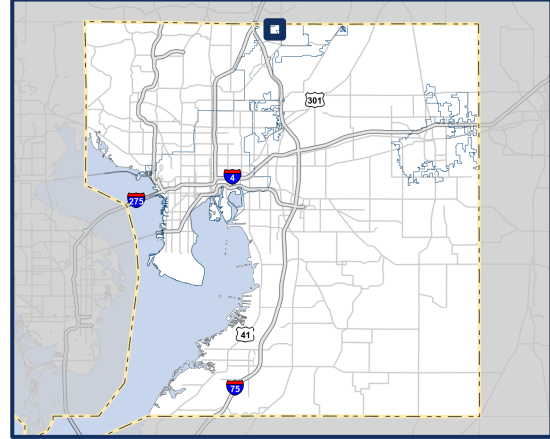
# Craig Latimer Supervisor of Elections

Hillsborough County, FL  
**Precinct 372**

## Legend

- Precinct Boundaries
- Parks
- Water
- City Limits

## Location



**VoteHillsborough.gov**  
**(813) 744-5900**

NOTICE: Every reasonable effort has been made to ensure the accuracy of this map. The Hillsborough County Supervisor of Elections Office does not assume any liability arising from this map. This map is provided without warranty of any kind, expressed or implied, including, but not limited to, the implied warranties of merchantability and fitness for a particular purpose. Created: 2023